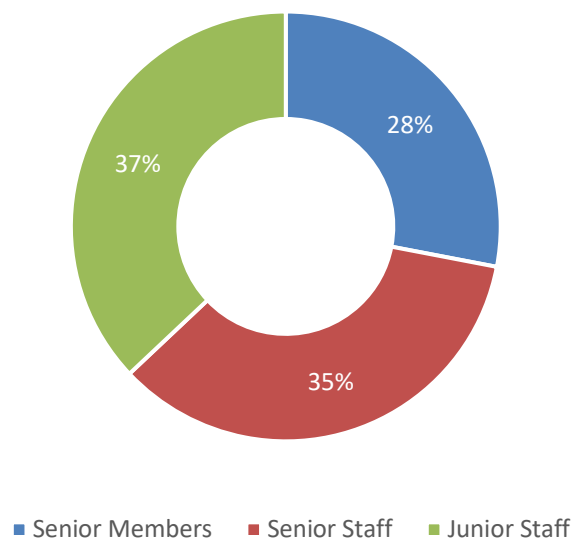


HUMAN RESOURCE STATISTICS: 2022/2023

Table 1.1. Employee by Staff Category and Gender

College	Gender	Senior Members	Senior Staff	Junior Staff	Total
College of Basic and Applied Sciences	Total	448	337	416	1,201
	Male	345	212	380	937
	Female	103	125	36	264
College of Education	Total	119	123	113	355
	Male	70	73	97	240
	Female	49	50	16	115
College of Health Sciences	Total	426	548	524	1,498
	Male	267	290	401	958
	Female	159	258	123	540
College of Humanities	Total	580	272	204	1,056
	Male	397	137	163	697
	Female	183	135	41	359
Central Administration	Total	242	985	1,142	2,369
	Male	132	552	922	1,606
	Female	110	433	220	763
Total	Total	1,815	2,265	2,399	6,479
	Male	1,211	1,264	1,963	4,438
	Female	604	1,001	436	2,041

Figure 1: Employee By Staff Category



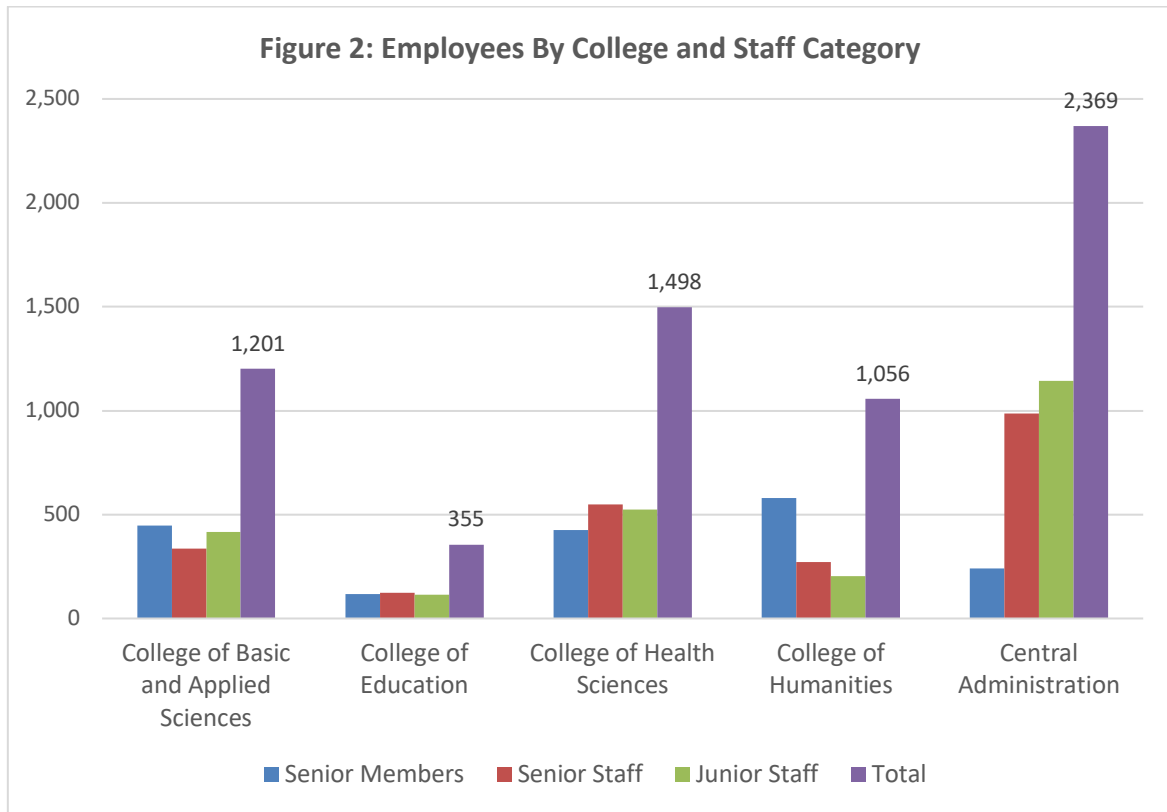


Table 1.2 Junior/Senior Staff by Gender

College	Staff Type	Senior Staff		Junior Staff	
		Male	Female	Male	Female
College of Basic and Applied Sciences	Total	212	125	380	36
	Technical	58	18	28	2
	Non-Technical	154	107	352	34
College of Education	Total	73	50	97	16
	Technical	10	3	1	0
	Non-Technical	63	47	96	16
College of Health Sciences	Total	290	258	401	123
	Technical	52	36	24	5
	Non-Technical	238	222	377	118
College of Humanities	Total	137	135	163	41
	Technical	36	12	25	5
	Non-Technical	101	123	138	36
Central Administration	Total	552	433	922	220
	Technical	101	78	62	42
	Non-Technical	451	355	860	178
Total	Total	1264	1001	1963	436
	Technical	257	147	140	54
	Non-Technical	1007	854	1823	382

Table 1.3 Academic Senior Members by College and Qualification

Faculties/ Institutions	Gender	Doctorate	Masters	Others	Total
College of Basic and Applied Sciences	Total	350	53	21	424
	Male	276	39	17	332
	Female	74	14	4	92
College of Education	Total	69	16	16	101
	Male	46	11	4	61
	Female	23	5	12	40
College of Health Sciences	Total	206	53	136	395
	Male	135	28	83	246
	Female	71	25	53	149
College of Humanities	Total	436	87	20	543
	Male	308	58	13	379
	Female	128	29	7	164
Total	Total	1061	209	193	1463
	Male	765	136	117	1018
	Female	296	73	76	445

Figure 3: Academic Senior Members by College and Qualification

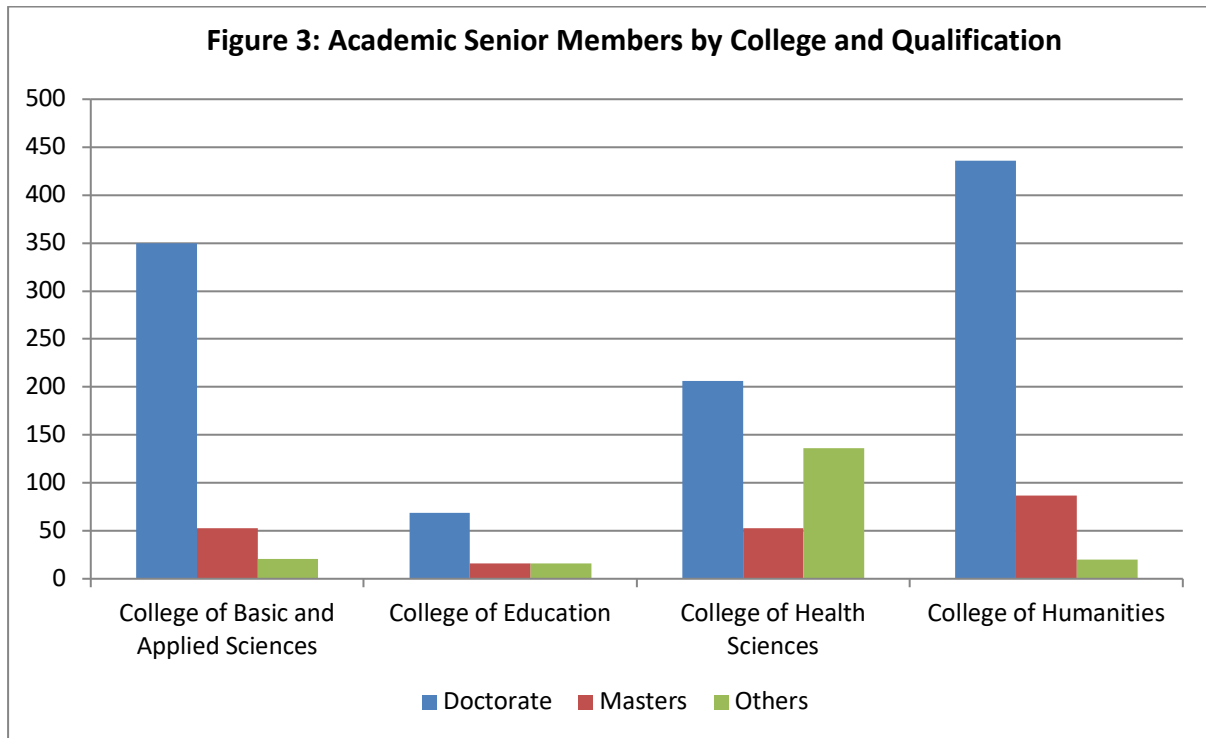


Table 1.4 Academic Senior Members by College and Age

Faculties/ Institutions	Gender	Below 30	31 - 40	41 - 50	51 - 60	Above 60	Total
College of Basic and Applied Sciences	Total	1	103	153	108	59	424
	Male	0	76	118	88	50	332
	Female	1	27	35	20	9	92
College of Education	Total	0	24	47	19	11	101
	Male	0	12	29	13	7	61
	Female	0	12	18	6	4	40
College of Health Sciences	Total	0	61	159	113	62	395
	Male	0	32	83	79	52	246
	Female	0	29	76	34	10	149
College of Humanities	Total	4	124	208	150	57	543
	Male	0	82	146	105	46	379
	Female	4	42	62	45	11	164
Total	Total	5	312	567	390	189	1463
	Male	0	202	376	285	155	1018
	Female	5	110	191	105	34	445

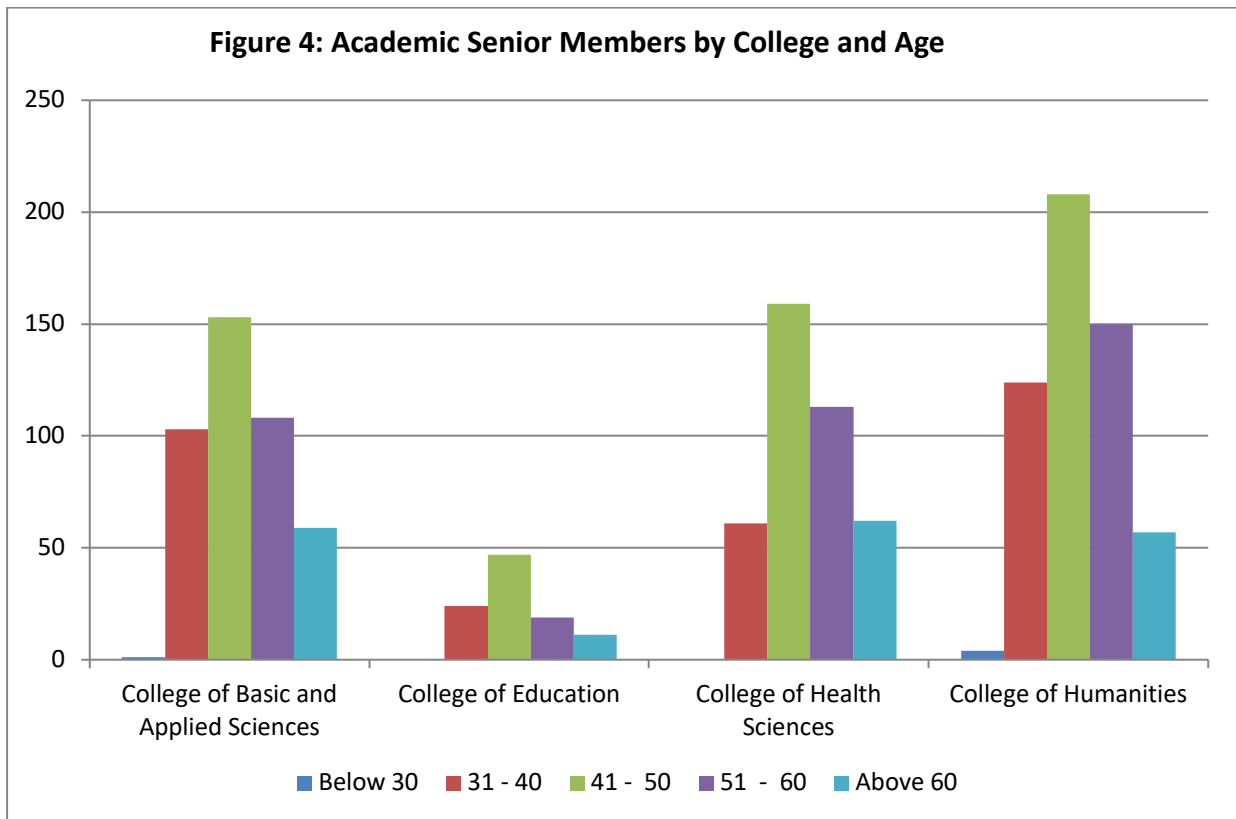


Table 1.5 Academic Senior Members by College and Rank

Faculties/ Institutions	Gender	Assistant Lecturer	Lecturer	Senior Lecturer	Associate Professor	Professor	Total
College of Basic and Applied Sciences	Total	34	114	174	65	37	424
	Male	25	85	136	50	36	332
	Female	9	29	38	15	1	92
College of Education	Total	13	42	33	9	4	101
	Male	9	17	26	6	3	61
	Female	4	25	7	3	1	40
College of Health Sciences	Total	35	61	191	77	31	395
	Male	13	28	125	53	27	246
	Female	22	33	66	24	4	149
College of Humanities	Total	54	141	207	93	48	543
	Male	30	103	137	68	41	379
	Female	24	38	70	25	7	164
Total	Total	136	358	605	244	120	1463
	Male	77	233	424	177	107	1018
	Female	59	125	181	67	13	445

Figure 5: Academic Senior Members by College and Rank

